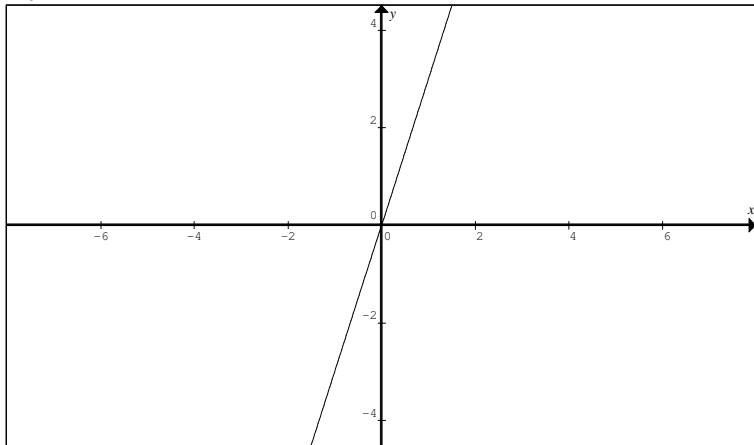


## Intermediate Algebra Skill

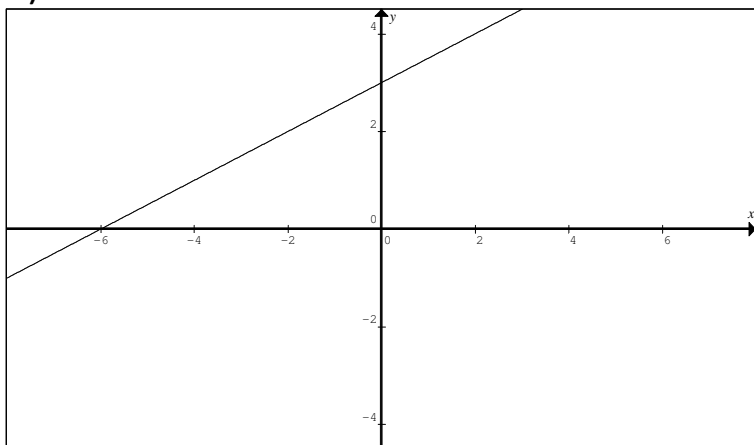
### Determining the Existence of the Inverse: Given the Graph

Determine whether or not the given function is one-to-one:

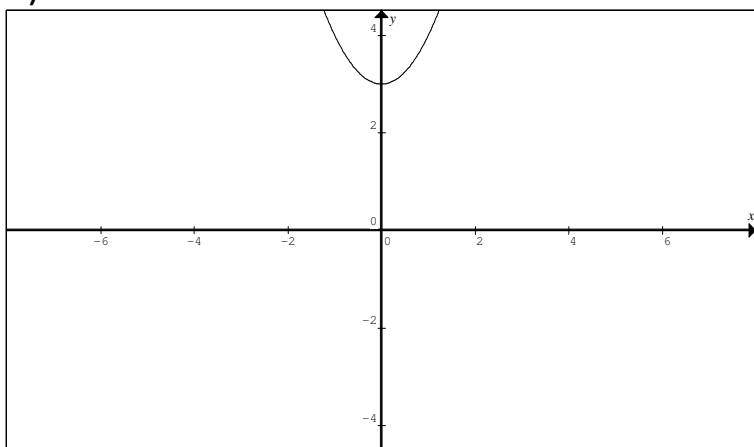
1)



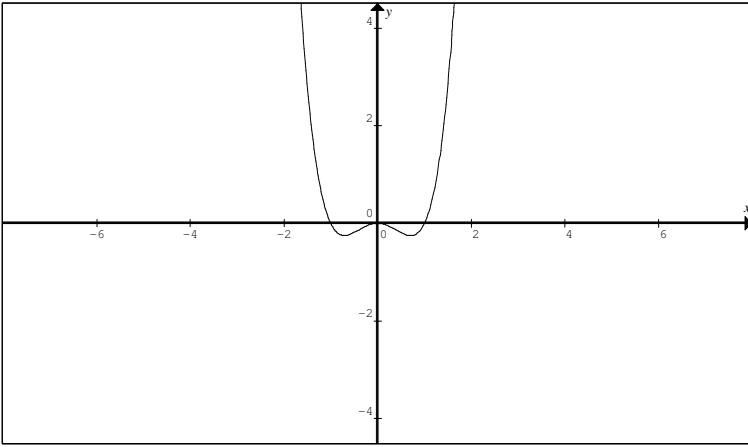
2)



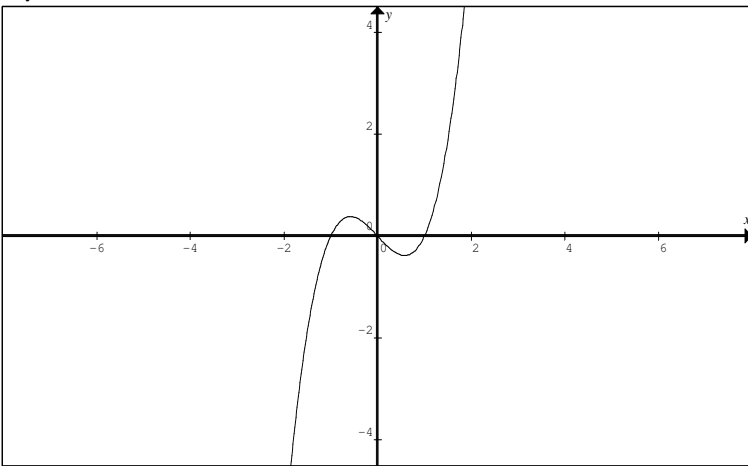
3)



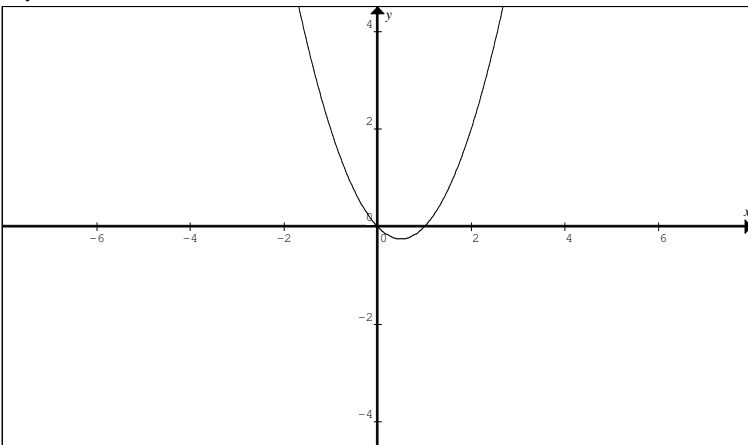
4)



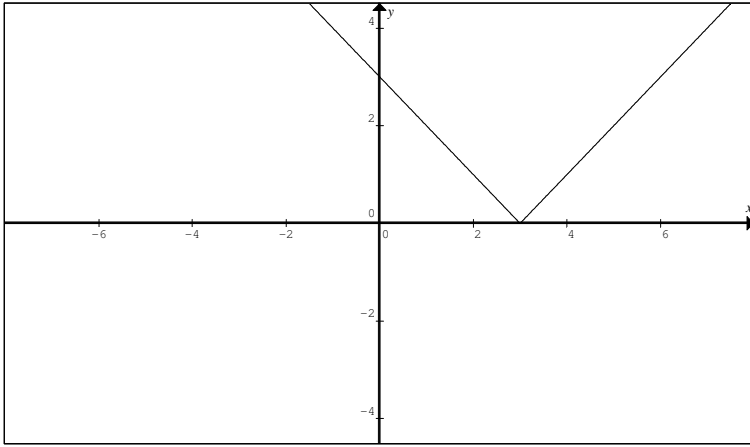
5)



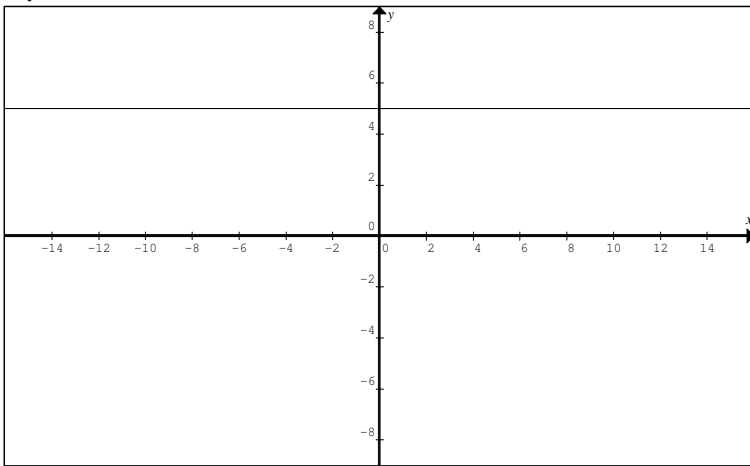
6)



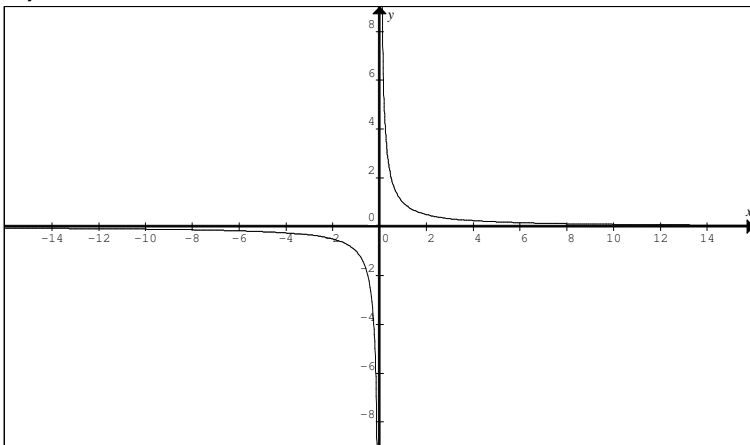
7)



8)



9)



## Answers to Determining the Existence of the Inverse: Given the Graph

- 1) 1-1
- 2) 1-1
- 3) not 1-1
- 4) not 1-1
- 5) not 1-1
- 6) not 1-1
- 7) not 1-1
- 8) not 1-1
- 9) 1-1